



A cooperation between Oksbøl Military Sports association (OMI) and Orienteering Club West invites you to take part in the Danish Open Biathlon Orienteering Championship in the days from the 29<sup>th</sup> to 30<sup>th</sup> OCT 2016.

**Competition Area:**

The SW part of Jutland at Nymindegab Military Camp

<https://www.google.dk/maps/@55.8168722,8.1999635,15z>.

The camp will be central facility for accommodation, dining facilities, weapons storage and competition office. The sprint competition will take place here on Sunday.

Saturdays classic competition will be conducted in Nymindegab Plantation. Starting point approximately 2-3 km south of the Camp (Please Note: Selftransportation from Camp to starting point Saturday morning).

**Competitions:**

Classic distance (Saturday 29<sup>th</sup> OCT): Location orienteering, free orienteering, shooting.

Sprint (Sunday 30<sup>th</sup> OCT): Free orienteering, prone shooting, free orienteering, standing shooting, free orienteering.

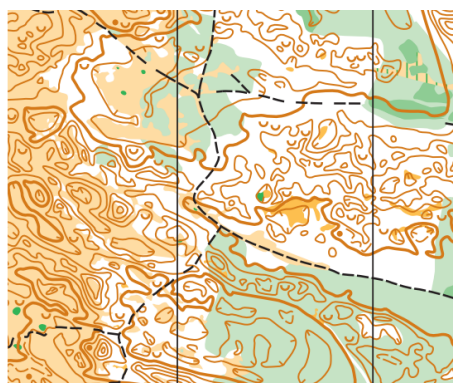
**Maps:**

Nyminde plantage (2013). Scale 1:10 000 (classic), for all classes. Equidistance 2,5 m.  
Gødel Bjerge (2010) scale 1:10.000 (sprint) for all classes. Equidistance 2,5 m.

**Terrain:**

Classic: Northsee coastal area with dunes and mixed forest with hard to good runability. Moderate to hilly terrain. Some areas are very detailed.

Sprint: Loops within the camp area and in the surrounding woods with many paths and good to very good runability. Flat to moderate hilly terrain.



**Punching system:**

Emit can be rented (note in the entryform) for a fee of 20 dkr/day. Competitors failing to return rented EMIT are charged a fee of 500 dkr.

**Weapons/targets:**

.22 long. Kurvinen targets are used.

**Entry:**

At the latest 16 Oct 2016 by sending entry form by email to [steen.oxfeldt@mail.dk](mailto:steen.oxfeldt@mail.dk).

Payments for competition, accommodation, rental of EMIT and dining:

**Danish competitors:**

Jyske bank konto nr.: **6610 1228631**, Please note; BIATHLON.

**Foreign competitors:**

All payment in advance - NO payment of starting fees at the competition.

Jyske Bank: SWIFT: JYBADKKK IBAN: **DK1666100001228631**

**Classes and course length:**

As per rules for Biathlon Orienteering. The organizer will merge classes if there are no or too few competitors registered to a specific class.

*Classic Course distances \* Class Winning time:*

*M/W 21 \* 45 - 60 min*

*M/W 20 \* 40 - 55 min*

*M/W 35 \* 40 - 55 min*

*M/W 40 \* 35 - 50 min*

*M/W 45 \* 35 - 50 min*

*M/W 50 \* 35 - 50 min*

*M/W 55 \* 30 - 45 min*

*M/W 60 \* 30 - 40 min*

*M/W 16 \* 30 - 40 min*

*M/W 14 \* 25 -30 min*

*M/W 12 \* 20 -25 min*

*M/W 10 \* 20-25 min*

*Classic for juniors (M/W 10 -14) will shoot only prone position and at targets for standing.*

*Location orienteering (M/W 10 -14) only 1500 meters and 5 positions only in the course, no targets at distance.*

*Sprint Course distance all classes have a winning time of 20 – 25 min.*

**Fees:**

Per individual competition 80 dkr.

**Adjustment shooting:**

Will be conducted at the shooting range, where the competition will take place. (Different from SATURDAY to SUNDAY. Timing will be listed in competition information).

Please note: Saturday adjustment shooting is planned to take place from 1000-1100!

**Accommodation:**

Will be available at Nymindegab military Camp from Friday afternoon to Sunday morning. Competition office and weapon storage (6-10 persons per room with bathing and toilet facilities in the hallway). The fee is 100 dkr for the whole period (Bed linen and a towel are included). We try to group each single club and country in their own rooms. (Please note in entryform if different rooms for women and men are required)

Other possibilities for accommodation in the area with own registration and payment:

[www.camping.dk/1camping/script/80cpz.asp?plnr=16831](http://www.camping.dk/1camping/script/80cpz.asp?plnr=16831)

[www.danhostel.dk/hostel/danhostel-nymindegab](http://www.danhostel.dk/hostel/danhostel-nymindegab)

[www.nymindegabkro.dk](http://www.nymindegabkro.dk)

**Dining:** (Nymindegab Camp Messhall)

Saturday morning: Breakfast and possibility of making lunch packet (Includes energy bar, juice, bottled water, fruit etc.)

Saturday evening: Banquet and price giving ceremony (incl. 1 beer or other kind of beverage)

Sunday morning: Breakfast and possibility of making lunch packet (Includes energy bar, juice, bottled water and fruit etc.).

This for a fee of 300 dkr per person.

Please Note: No serving Friday evening!

**Pictures from the area:** <https://www.google.dk/maps/@55.8009619,8.1925886,16z>

# Welcome!